



HD Mesh
HIGH DENSITY MESH SYSTEM
USER MANUAL

October 25, 2006

Revision 1.6

Table of Contents	
Preface	iii
Warranty Information	iii
Contact Information.....	iii
Section 1 Introduction	4
Overview.....	4
Section 2 Hardware Overview	5
System Contents	5
System Radio Kits Option	6
Location of Serial Number	6
Section 2 Getting Started	7
Opening the Box.....	7
Connections and Power.....	7
Location of RJ-45/LED Port.....	8
HD MESH Management.....	8
Password	8
Browser Interface.....	9
Browser Interface Login Screen	9
Primary Features and Pages of the Browser Interface:.....	10
Winbox (GUI) Interface.....	11
Primary Features and Pages of the Winbox Interface:.....	12
Command Line Interface.....	13
Telnet.....	13
Section 3 Basic Configuration via Web Browser.....	14
Web Browser Interface page	14
Port Web Configuration	15
Port Name Web Configuration	15
Interface Web Graphing.....	15
System Web Configuration	16
Firewall Web Configuration.....	16
DHCP Server Web Configuration	17
Upgrading RouterOS via Web Browser	18
Section 4 Basic Configuration via Winbox	20
Configuring an IP address	20
Configuring the Wireless Card	21
Configure Firewall.....	22
Configuring DHCP Server	23
Configuring OSPF	26
Section 5 Basic Configuration via CLI	29
Launching CLI "Setup"	29
Configuring IP Address via CLI Setup.....	30
Configuring Gateway via CLI Setup.....	31
Configure DHCP Client via CLI Setup.....	31
Configuring DHCP Server via CLI Setup.....	32
Section 6 Default Configuration.....	33
Restoring Default Configuration WinBox.....	34
Restoring Default Configuration Command Line Interface.....	35
Appendix A Serial Port	36
Management serial cable.....	36
Appendix B Specifications.....	37

Preface

This manual covers the basic configuration and installation of the HD Mesh system, and applies to the following part numbers:

HD Mesh 1	US Model
HD Mesh 2	International Model

The HD Mesh 1/2 system consists of an outdoor rated NEMA box (R3/ IP42) that includes a 532 Mikrotik router board, a CM9 Wireless Access Point, one Omni 8dBi antenna, and 5 Trango PoE ports. The HD Mesh system may be used in conjunction with any Trango Point to Point backhaul wireless broadband equipment in a ring architecture to provide access to Wifi Hotspot as well as the local devices.

The HD Mesh system when used in conjunction with any Trango Point to Point wireless Broadband equipment in a ring architecture will provide a reliable, redundant, high capacity Mesh style wireless connection.

Warranty Information

HD Mesh units from Trango Broadband Wireless are warranted for one year from date of purchase. Please see www.trangobroadband.com for a complete description of warranty coverage and limitations.

Contact Information

Corporate Headquarters	Trango Broadband Wireless, a division of Trango Systems, Inc. 15070 Avenue of Science Suite 200 San Diego, CA 92128 USA
Web Sites	www.trangobroadband.com www.trangosys.com
Sales Inquiries	email: sales@trangobroadband.com Telephone: 1-858-653-3900
Technical Support	email: techsupport@trangobroadband.com Telephone: 1-858-653-3900
Firmware Update Notices Mailing List	http://www.trangobroadband.com/maillinglist/maillingListAdd.aspx

Section 1 Introduction

Trango has developed a mesh architecture that maximizes up time reliability, while minimizing the constraints on actual data throughput. The Trango solution focuses the fail-safe functions at the most important element of the network, the backbone. Maintaining a robust, hi-speed and redundant mesh backbone is the most critical aspect of the network. The result is that HD Mesh provides system performance and reliability well beyond that of competing technologies.

Overview

Trango's HD Mesh wireless backbone radios are available in 4.9, 5.3 and 5.8 GHz frequency bands. Each HD Mesh micro cell base station includes an environmentally controlled enclosure with thermostat controlled heater and fan, nine port router, and can support up to six additional Ethernet devices (cameras, access points, etc.). HD Mesh is also designed to support WiMAX-ready radios and 802.11g for WiFi hotspots. This highly flexible and scalable system is built to grow with the needs of any network and like all Trango equipment, HD Mesh is designed for easy installation and maintenance.



The HD Mesh node box provides an innovative and easy method to create a self-healing hi-speed backbone ring for reliable delivery of wireless broadband connectivity. The HD Mesh system is ideal for high-capacity metro backhaul, broadband access, mesh systems bandwidth injection, WiMAX systems, VOIP traffic and IP-based video surveillance.

Section 2 Hardware Overview

The HD Mesh is an outdoor NEMA rated box that houses a Mikrotik 532 router. The router provides OSPF functionality on the routed ports that connect to two Trango Point to Point wireless backhaul radios which results in a layer 3 self healing wireless network. The other three Trango PoE ports can be used in conjunction with any Trango Access Point to provide wireless connections in a Point to Multipoint format. Each one of these PoE ports connects to an individual port on the router. This results in a unique broadcast domain for each Access Point yielding higher performance at each cell. The router board also connects to a MiniPCI CM9 wireless board that functions as a WiFi Access Point. This Access Point uses an Omni 8 dBi antenna to provide a hotspot solution. The other four ports on the router can be used with any Ethernet or IP devices and can be configured as bridge ports or router ports, for meeting different application requirements. The HD Mesh box is powered by 110 Volts AC for HD Mesh 1 and 220 Volts AC for HD Mesh 2. The box is design to operate in temperatures between -40° C to 60° C.

System Contents

The HD Mesh system is available in two versions:

HD Mesh 1 - US mode (110 VAC)
 HD Mesh 2 - International model (220 VAC)

Each HD Mesh kit consists of one HD Mesh Box, one Omni 8dBi antenna, two mounting brackets, two U bolts, four screws, four washers, and four nuts. (Figure 1)

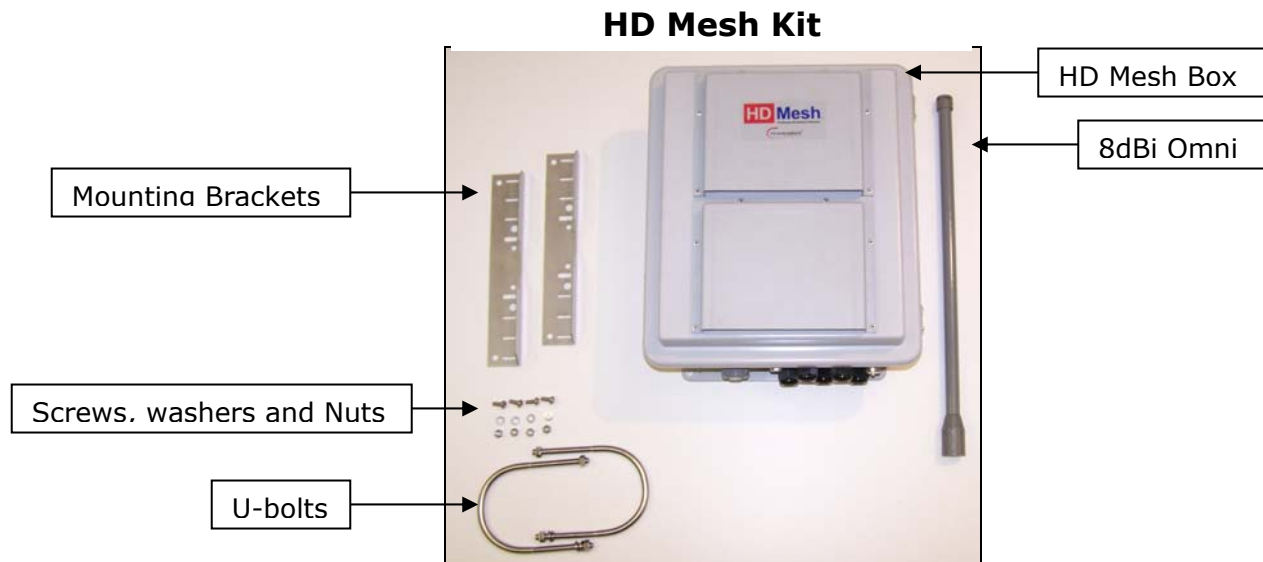


Figure 1

System Radio Kits Option

- HDM5010-EXT:** Includes 2 Atlas5010-EXT 5 GHz radios, connectorized for external antennas
- HDM5010-INT:** Includes 2 Atlas5010-INT 5 GHz radios, with integrated 23dBi antennas
- HDM4900-INT-18:** Includes 2 Atlas4900-INT-18 4.9GHz radios with integrated 18dBi antennas
- HDM4900-INT-22:** Includes 2 Atlas4900-INT-22 4.9GHz radios with integrated 22 dBi antennas
- HDM4900-EXT:** Includes 2 Atlas4900-EXT 4.9GHz radios, connectorized for external antennas

Location of Serial Number

The serial number can be found on the inside of the door of the HD Mesh box. (Figure 2)



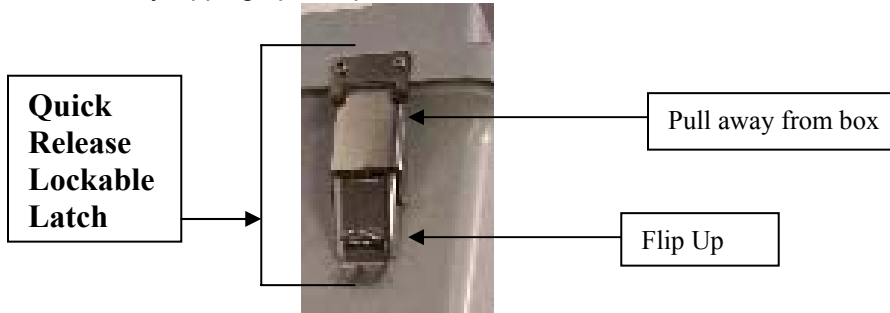
Figure 2

Section 2 Getting Started

It is always a good idea to first provision and test the equipment on the bench before deploying them in the field. This is a particularly useful exercise for the novice user.

Opening the Box

Open the box by flipping up the quick release lockable latches.



Connections and Power

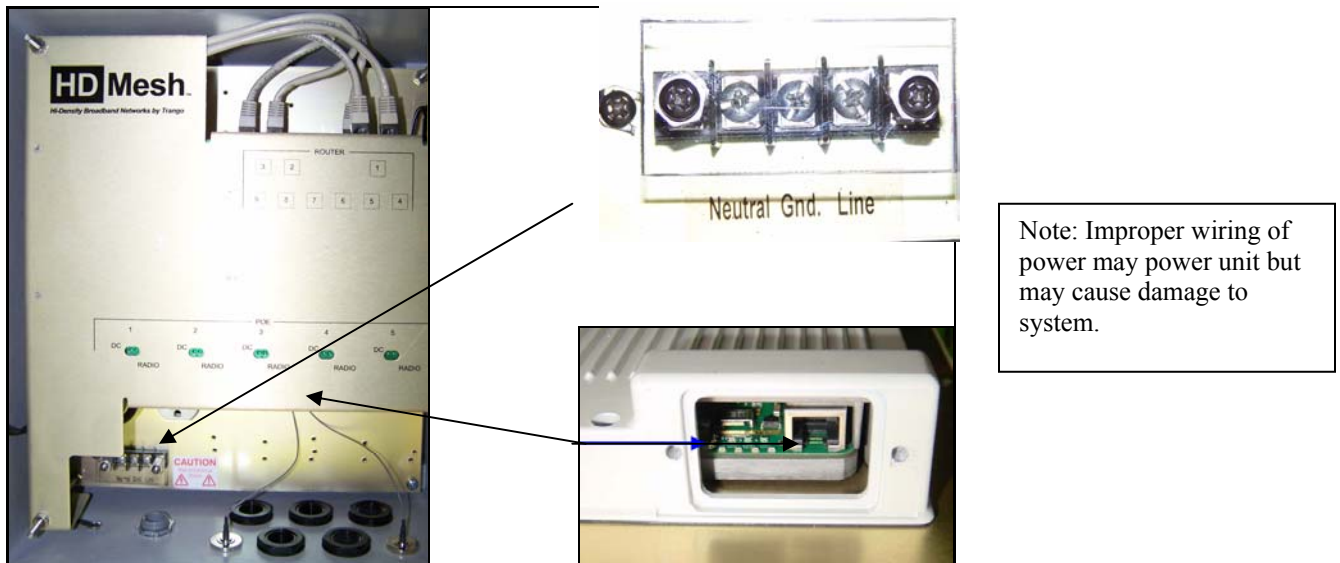


Figure 3

- Power is applied to the HD Mesh unit via the Power Input Terminals located at the bottom left hand corner inside the box.
- There are 5 PoE ports to provide connection to 5 Trango Broadband radios. Connect a Cat-5 (straight through) Ethernet cable (Trango Broadband recommends shielded twisted pair) between the POE port of the HD Mesh unit and the RJ-45 connector on the radio.
- Both green LEDs on the POE of the HD Mesh should be lighted, indicating power is present to the POE as well as the radio. (Figure 3)

Location of RJ-45/LED Port

The RJ-45 connectors for Trango Power Over Ethernet (PoE) injectors are located at the bottom of the mounting plate inside the HD Mesh box. The router ports and serial port are located at the top of the mounting plate. The PoE diagnostic LEDs are located on the face lid of the mounting plate. Functionality of the LEDs is described later in this text. (Figure 4)

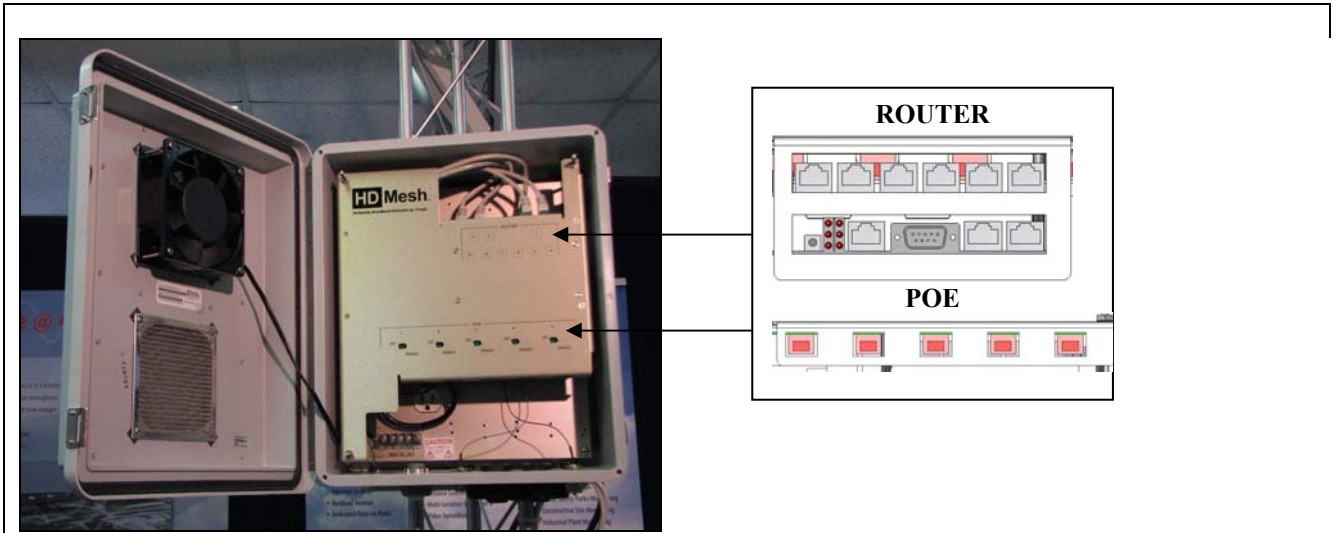


Figure 4

HD MESH Management

The HD Mesh unit can be configured using a Command Line Interface (CLI), Web Browser (HTTP) interface, or Winbox (GUI) interface. Although all methods are comprehensive and powerful, the CLI method provides more functionality.

Password

The HD Mesh unit is pre-configured with the following default account and password. This user name and password will allow you to gain access via CLI, HTTP, or Winbox.

User Name	admin
Password	trango

Note: The password will default to a blank password if the unit is set to factory defaults. The user name will still be admin.

Browser Interface

The HDMESH features a convenient and easy-to-use web based configuration and management tool. No additional software is needed on your computer other than a web browser. The browser interface offers limited and basic functions, although the majority can only be performed via command line interface (CLI).

To use the browser interface, the following must be present:

- An Ethernet (wired or wireless) connection between a PC and the HD Mesh unit.
- Ethernet PC connection with IP/subnet that is routable to the HD Mesh unit.
- A web browser on the PC (i.e. Microsoft Internet Explorer)

In order to use the browser interface – simply connect the HD Mesh unit to a PC and type the HD Mesh's IP address into the web browser (i.e. Microsoft Internet Explorer). This will bring up the Login page.

Browser Interface Login Screen

The first page of the web browser is called the configuration page. The configuration page offers the following options.

- Downloading Winbox
- Displaying Graphs
- Telnet into the router
- Documentation from Mikrotik's Website & License Information

Winbox can be downloaded from the router itself under the configuration page of the web browser. The top left side of the configuration page offers a link to download the Winbox application. The application can also be downloaded from Mikrotik's website. (Figure 5)

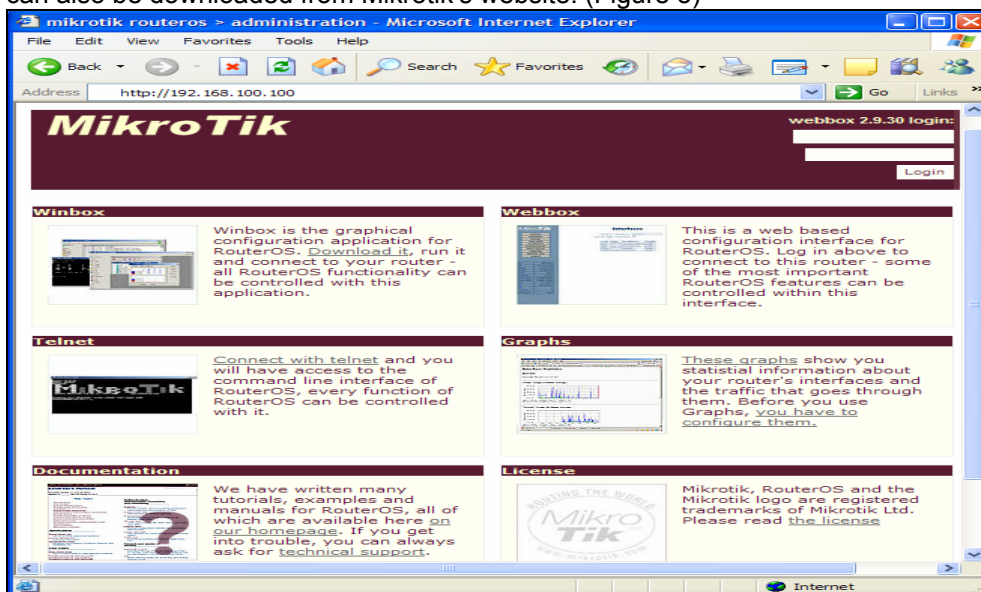


Figure 5

Type the username (default: admin) and password (default **trango**) and continue. This will bring up the router's Interface page.

Primary Features and Pages of the Browser Interface:

Navigation Column: Each page features a navigation column that runs along the left-hand side of the page. On the bottom of the navigation column is the current status of the router including its System ID, IP address, Time, Date, CPU Utilization, Uptime, Disk Space Free, Disk Space Total, Memory Free, Memory Total, Rx, Tx, AP, Clients, and Timeout.

The navigation column also features buttons to each of the following pages:

System: This page shows ID, Version, System Reset, Reboot, Change password, and Web page refresh period.

Interface: The interface name, type, IP address, enable/disable and graph are seen on this page. It is the first page shown after login.

Firewall: This page allows you to setup a basic firewall by selecting the Public interface and check boxes of Protect customer, Protect router, and NAT.

Routes: This page will display all routing information with capabilities of adding static routes.

Simple Queues: Simple Queues page allows you to rate limit traffic on the router.

PPPoE: Allows you to enable PPPoE on an interface and add users and passwords.

Registration Table: This page will show you current registered clients.

Access List: This page will allow adding an Access List based on MAC address, Interface, Authenticate and Forward settings.

DHCP Server: This page will show you current DHCP server settings to include current DHCP leases.

Upgrade: This page will allow you to upload an upgrade package or downgrade.

Logout: This link will end the current browser session with the router.

Winbox (GUI) Interface

The HDMESH features a convenient and easy-to-use GUI interface tool. The Winbox interface offers the closest functionality to the Command Line Interface (CLI). The Winbox interface provides a lot more functionality than the Web Interface. Winbox is improving with each release but CLI still provides the most functionality

To use the Winbox, the following must be present:

- An Ethernet (wired or wireless) connection between a PC and the HD Mesh unit.
- Ethernet PC connection to the HD Mesh unit.

In order to use the Winbox simply connect the HD Mesh unit to a PC and type the HD Mesh's IP address into the "Connect To" space. Clicking on the dotted square will perform a broadcast scan and show MAC addresses and IP addresses of HD Mesh Nodes discovered on the network. Supply a Login Name "admin" and password "trango" (Figure 6)

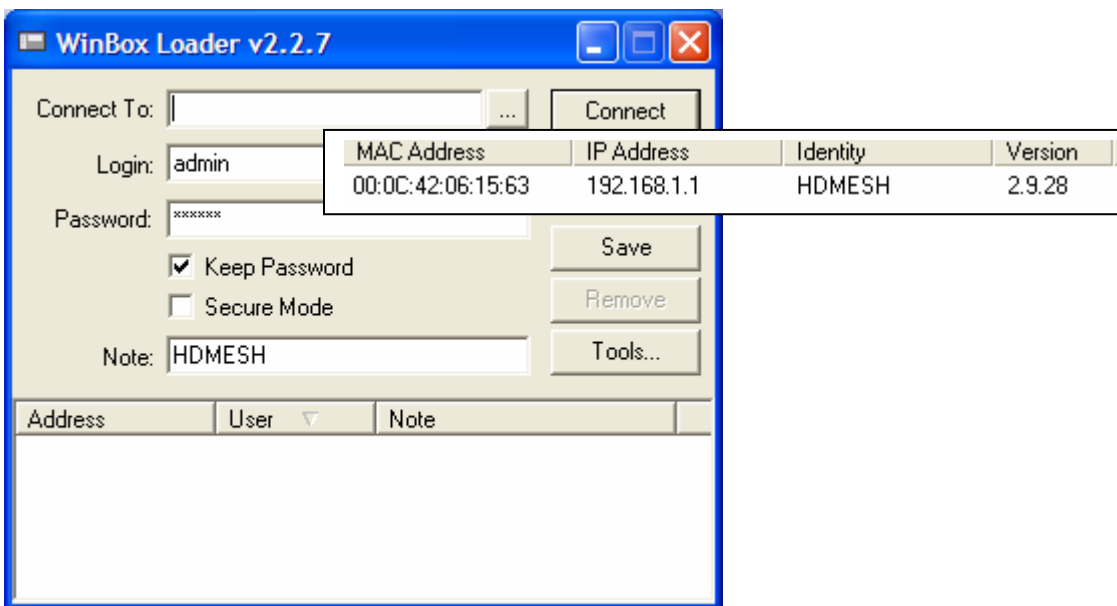


Figure 6

Primary Features and Pages of the Winbox Interface:

Menu Bar: Winbox has a menu bar that runs along the left-hand side of the page.

Interface: General information of the interface, Status, Ethernet port settings and traffic.

Wireless: Wireless status, Access List, Registration, Connect List, Security Profiles, and wireless settings.

Bridge: Shows Bridge status, Ports in the Bridge, Filters, Broute, NAT and Hosts.

PPP: Configure PPP interface, Secrets, Profiles, and Active Connections

IP: Includes the following Menus: Addresses, Routers, Pool, ARP, VRRP, Firewall, Socks, UPnP, Traffic Flow, Accounting, Services, Packing, Neighbors, DNS, DHCP Client, DHCP Server, DHCP Relay, Hotspot, IPSec, and Proxy.

Routing: Display menus for the following: BGP, RIP, OSPF, and prefix

Ports: Displays the serial port where the following setting can be changed. Name, Baud Rate, Data Bits, Parity, Stop Bits and Flow Control.

Queues: Display Simple Queues, Interface Queues, Queue Tree, and Queue Types.

Drivers: Displays drivers for the Ethernet and Wireless chip set.

System: This button shows setting for Identity, Clock, Resources, License, Packages, Auto Upgrade, Logging, History, Console, Scripts, Scheduler, Watchdog, Reboot, Shutdown, NTP Client and NTP Server.

Files: Displays files on your router which include backups and hotspot html pages.

Log: Display the log information of the router.

SNMP: SNMP Server setting. By default *public* has read only access.

Users: Displays Users information. By default there is only one account *admin* which has full access.

Radius: Radius information is displayed and can be configured.

Tools: Tools menu has the following tools: Ping, MAC Ping, Traceroute, Bandwidth Test, BTest Server, Traffic monitor, Packet Sniffer, Torch, MAC Server, Graphing, IP Scan, Ping Speed, Flood Ping, and Netwatch.

New Terminal: Opens a CLI session to the router.

Telnet: Allows to telnet to an IP address using the following methods of telnet. Telnet, SSH, and MAC Telnet.

Password: Changes the password of the account that is currently being used.

Certificate: This menu allows you to see the current Keys, Import, Decrypt and Reset keys.

Make SUPOUT.rif: This will prompt for a file name that will be created with troubleshooting information.

Manual: The Manual button is a direct link to Microtik's manual.

Exit: This will close the Winbox session.

Command Line Interface

The Web browser interface covers very basic features in a limited role. The command line interface (CLI) provides much more functionality, and is usually the management tool of choice for experienced users. The CLI can be accessed through Telnet or Console cable.

Telnet

Open a command prompt (DOS) session on your PC. Open a Telnet session by typing:

telnet [ip address of router]

All HD mesh units are pre-configured at the factory. The factory default username is *admin* and password is *trango*. Once you connect to the router you will be greeted with the current RouterOS version information and prompted for a login.

CLI Login Example


```
C:>telnet 192.168.100.100
MikroTik v2.9.32
Login: admin
Password:

MMM      MMM      KKK      TTTTTTTTTTT      KKK
MMMM     MMMM     KKK      TTTTTTTTTTT      KKK
MMM MMMM MMM III  KKK  KKK  RRRRRR      OOOOOO      TTT      III  KKK  KKK
MMM  MM  MMM  III  KKKKK  RRR  RRR  OOO  OOO      TTT      III  KKKKK
MMM      MMM  III  KKK  KKK  RRRRRR      OOO  OOO      TTT      III  KKK  KKK
MMM      MMM  III  KKK  KKK  RRR  RRR      OOOOOO      TTT      III  KKK  KKK

MikroTik RouterOS 2.9.32 (c) 1999-2006      http://www.mikrotik.com/

Terminal ansi detected, using single line input mode
[admin@HDMESH] > quit
```

To terminate a CLI session (Telnet or Serial) type the command **quit**.

-  **Note:** Type **?** for a listing of CLI commands and directories. More basic information on the CLI will be covered throughout this text for advance CLI commands reference Mikrotik's website for documentation www.mikrotik.com

Section 3 Basic Configuration via Web Browser

This section describes a few basic concepts, as well as how to configure basic settings using the Browser (HTTP) Interface. This section is written to address only the most basic steps. It is highly recommended that you visit and read Mikrotik's website to gain an understanding of all important configuration parameters.

In this section you will learn the following:

- Configure an IP address
- Configure Firewall
- Configure DHCP Server
- Upgrading the RouterOS

The initial page once you have login is the Interface page. Clicking on the IP address will allow you to assign the interface an IP address. Clicking on the Interface will allow you to change the interface name from the standard naming convention. (Figure G)

Web Browser Interface page

MikroTik Webbox

System
Interface
Firewall
Routes
SimpleQueues
PPPoE
RegTable
AccessList
DHCP Server
Upgrade
Logout

ID	HDMESH
IP	192.168.1.1
Time	17:58:22
Date	1/1/2000
CPU	27%
Uptime	1d 1h
DiskFree	92.0 KiB
DiskTotal	124.4 KiB
MemFree	46.3 KiB
MemTotal	61.6 KiB
Rx	8.45Kbps

Interfaces

Default gateway:

Use bridge interface:

Name	Type	IP address	Graph
ether1	ethernet	192.168.1.1/24	graph
ether2	ethernet	192.168.2.1/24	graph
ether3	ethernet	192.168.3.1/24	graph
ether9	ethernet	searching...	graph
ether8	ethernet	disabled	graph
ether7	ethernet	disabled	graph
ether6	ethernet	disabled	graph
ether5	ethernet	192.168.5.1/24	graph
ether4	ethernet	192.168.4.1/24	graph
wlan1	wireless	192.168.10.1/24	graph

Clicking on the IP address will bring up the port configuration page.

Clicking on the Name will open a page to change the Name.

Clicking the graph link will open a MRTG graph of the interface

Figure 7

Port Web Configuration

Clicking on the IP address of the interface will bring up the port configuration page. The port can be disabled, configured to obtain an IP address from a DHCP server, or manually configured with an IP address and Netmask. (Figure 8)

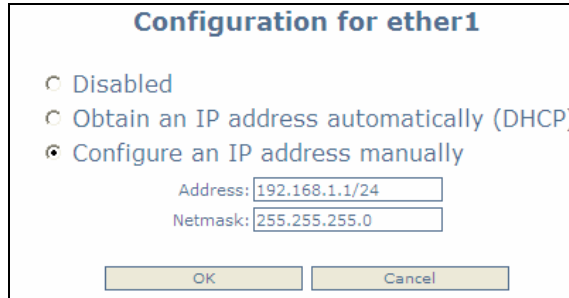


Figure 8

Port Name Web Configuration

Clicking on the name of the port will allow you to change the name of the port. (Figure 9)

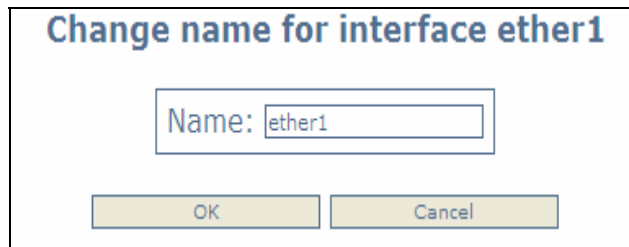


Figure 9

Interface Web Graphing

The Interface page has a graph link which will display the in and out traffic of an interface. The graph is broken down into daily, weekly, monthly and yearly results. (Figure 10)

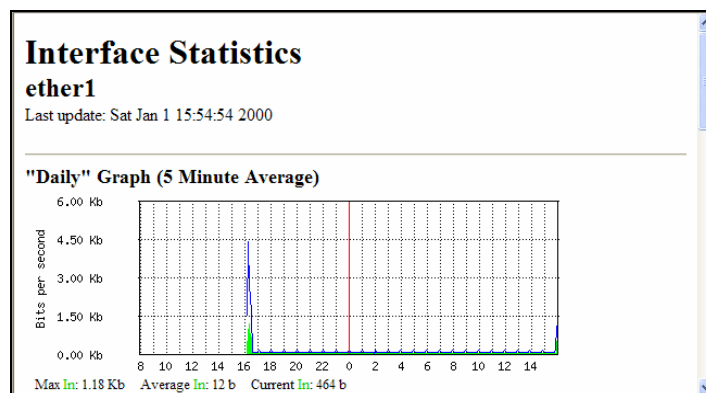



Figure 10

System Web Configuration

The System page will allow you to change the password simply by clicking the password link. The ID of the HDMESH can also be changed from the system page. The unit can also be rebooted. The system page also provides you with a system RESET. (Figure 11)

-  Note: The system reset defaults the unit completely to Mikrotik's default configuration. You will then need to reload Trango's default configuration.

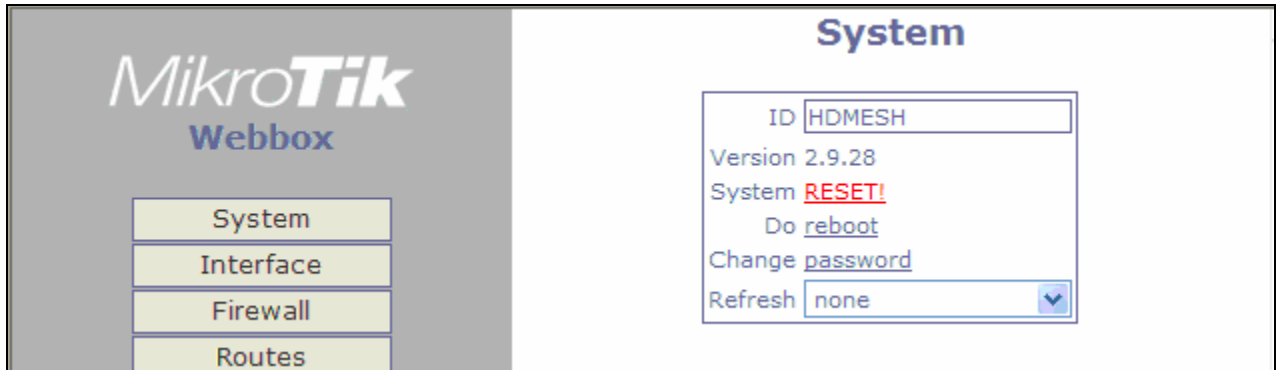


Figure 11

Firewall Web Configuration

The HD Mesh node by default is configured to use public interface ether 9 and NAT enabled. The web browser is the easiest way to create a firewall. Simply select a public interface and check the NAT box. Checking Protect Router and Protect Customer adds additional rules to strength the firewall. (Figure 12)

- Public Interface
- Protect Router
- Protect Customer
- NAT

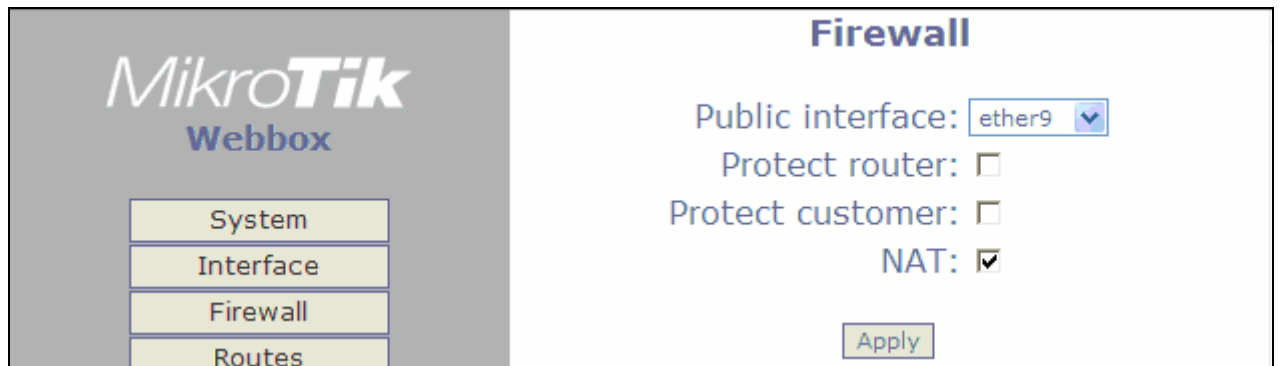


Figure 12

DHCP Server Web Configuration

The HD Mesh node is configured by default as a DHCP server. DHCP Services can be applied to any interface. DHCP leases are also shown on this page. The following information must be to be provided. (Figure 13)

- The DHCP interface
- The IP address range that will be issues to DHCP clients
- Primary & Secondary DNS Server
- The Gateway IP address

DHCP Server is on

Enabled:

Address range: -

Gateway:

Primary DNS Server:

Secondary DNS Server:

Interface: ▼

Leases

Address	MAC-Address	Client-ID	Dynamic	Status	
192.168.1.100	00:0A:E4:DC:8B:02	1:0:a:e4:dc:8b:2	yes	bound	make-static remove

Figure 13

Upgrading RouterOS via Web Browser

The RouterOS can be upgraded from the web browser upgrade page. The RouterOS can be downloaded from Mikrotik's web site www.mikrotik.com Click on the UPGRADE from the navigation menu on the left side of the web page. (Figure 14)

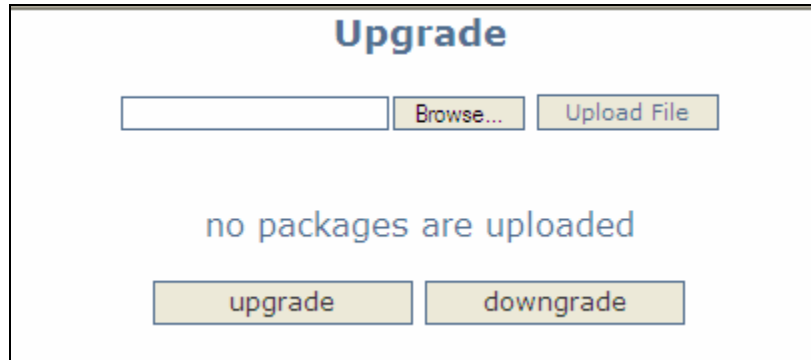


Figure 14

A window browser will open for you to select the NPK file to upload. Once the file is selected click the upload button to begin transferring the file from you computer to the router. (Figure 15)

 Note: This will only transfer the file to the router

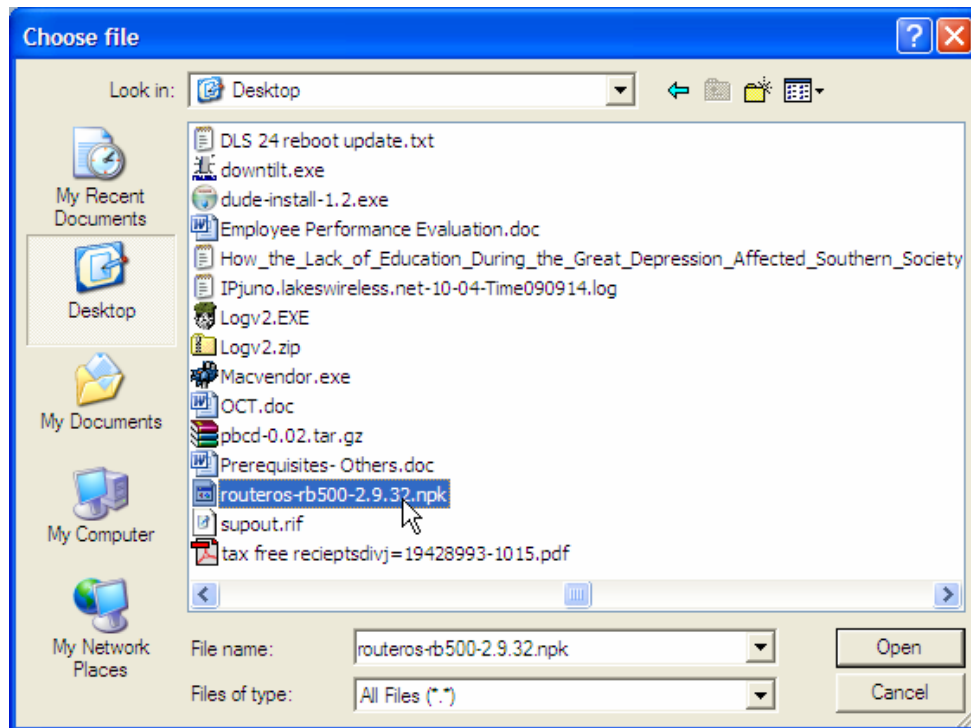


Figure 15

Once the file has been successfully uploaded to the router the upgrade and downgrade button can be used. (Figure 16)

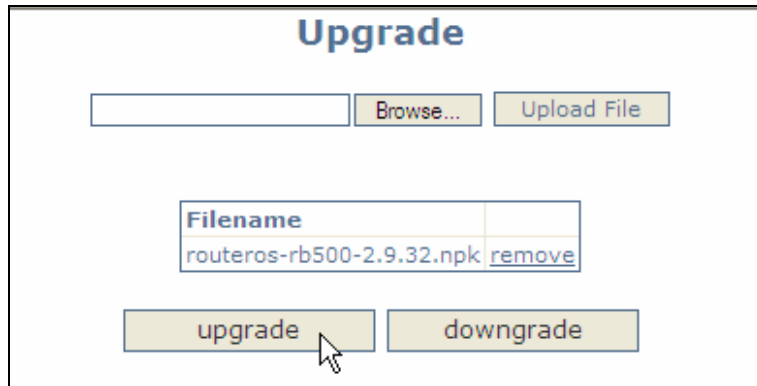


Figure 16

The upgrade procedure will log out the current web session. The process will take a few minutes for the upgrade procedure to complete. (Figure 17)

 **Note: DO NOT POWER OFF router during this process**

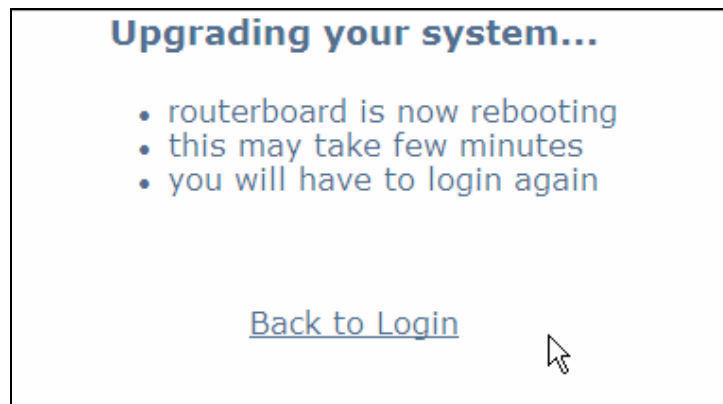


Figure 17

To verify the upgrade procedure was successful. Log back into the router and check the version under the system page. (Figure 18)

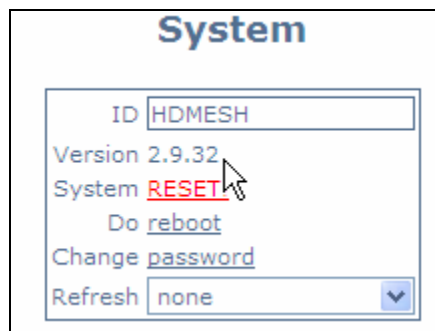


Figure 18

Section 4 Basic Configuration via Winbox

This section describes how to configure basic settings using Winbox. This section is written to address only the basic steps. It is highly recommended that you visit and read Mikrotik's website to gain an understanding of all important configuration parameters.

In this section you will learn the following:

- Configure an IP address
- Configure Wireless Card
- Configure Firewall
- Configure DHCP Server
- Configure OSPF

Configuring an IP address

Once you have logged into Winbox the Menu bar on the left will appear. Clicking on the IP and then addresses will display all interfaces and IP addresses of the interfaces. (Figure 19)

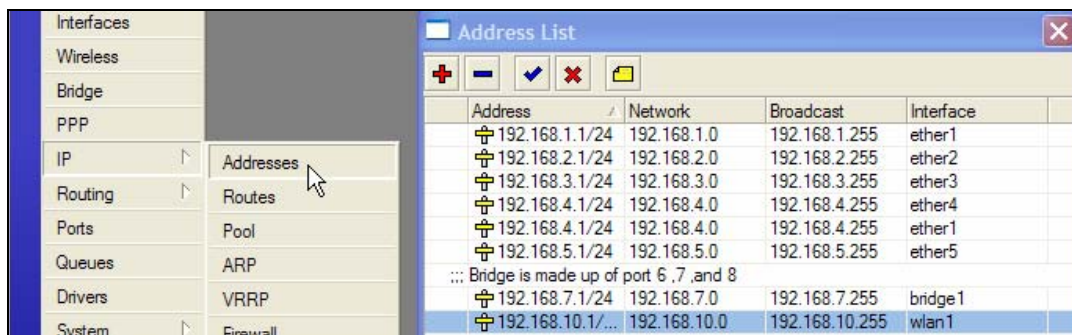


Figure 19

Double clicking on the IP address will bring up the IP address configuration window. Select the interface; assign an IP address followed by a slash and the bits of the subnet mask. If you provide the bits of the subnet mask the Network and Broadcast will be populated automatically once apply is clicked. Multiple IP addresses can be assigned to a single interface. (Figure 20)

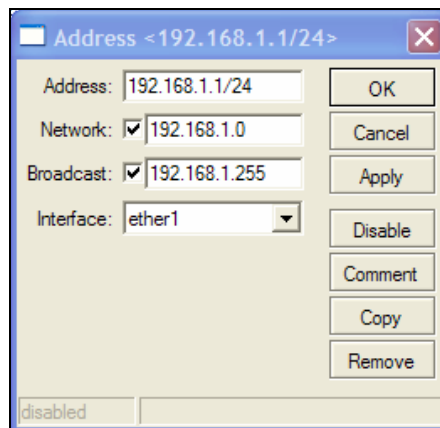


Figure 20

Configuring the Wireless Card

Clicking the Wireless menu option from the menu bar will bring up the Wireless Tables. Double clicking on the wireless interface will bring up the Interface configuration menu. Once in the configuration menu there are a number of tabs General, Wireless, Data Rates, Advance and Status are just a few. For more information on settings consult Mikrotik's website. (Figure 21 & 22)

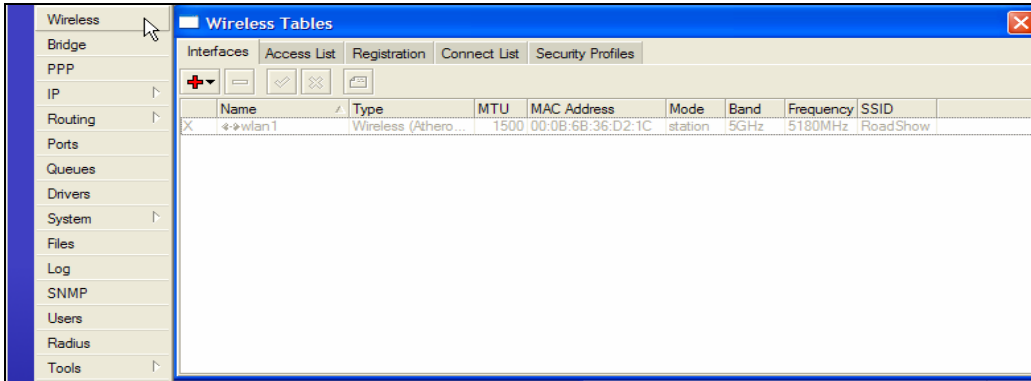


Figure 21

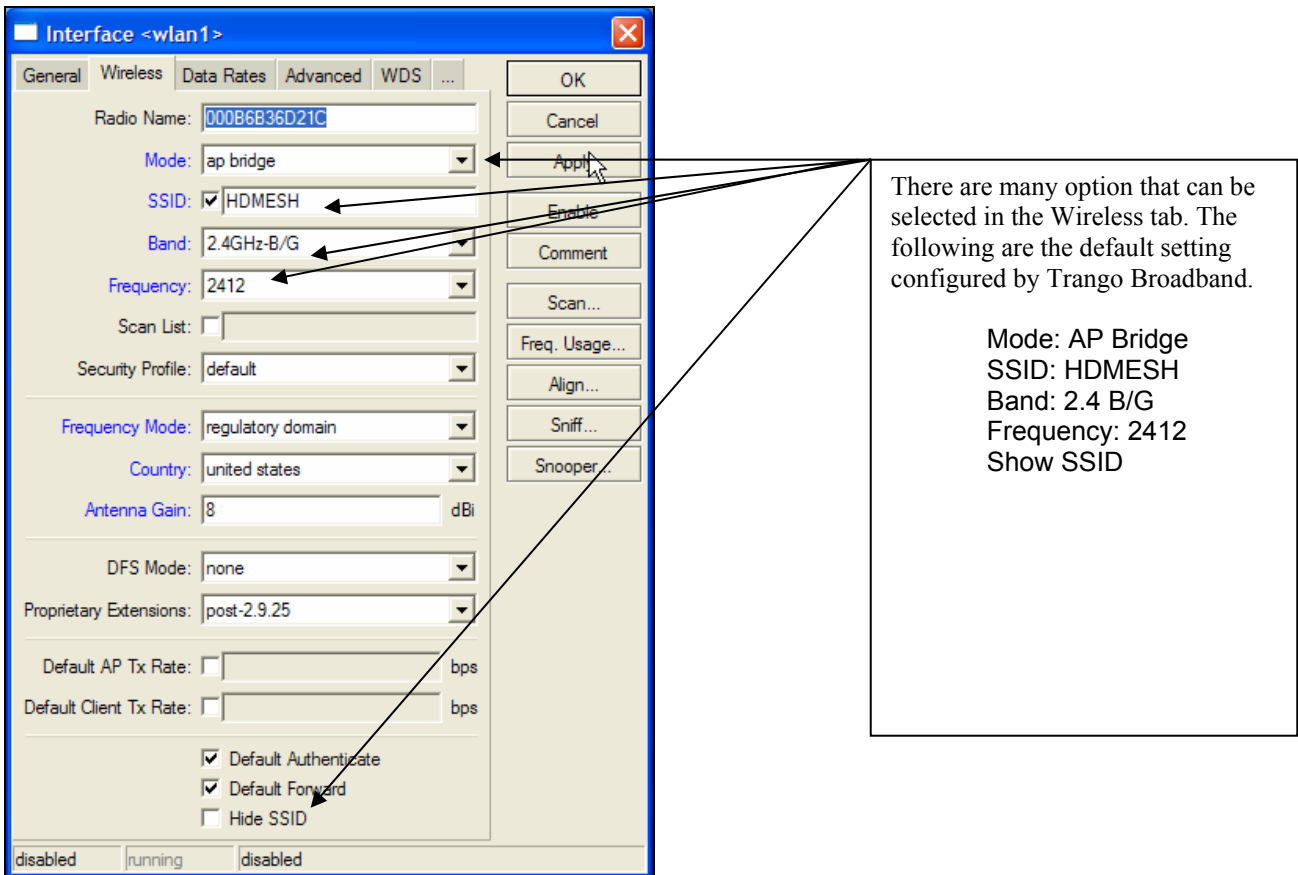


Figure 22

Configure Firewall

The firewall configuration offers many options but this section will only cover creating NAT on an interface using masquerading. In the Winbox session select IP menu then Firewall menu option. This will open the Firewall Windows. (Figure 23)

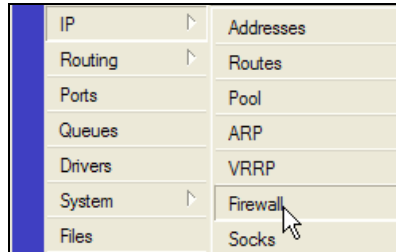


Figure 23

The following tabs are presented in the firewall window: Filter Rules, NAT, Mangle, Connections, and Address Lists. Select the NAT table and click on the red plus sign to open the New NAT Rule window. Once the New NAT Rule window is open the Chain must be set to *srcnat* and the Out Interface. (Figure 24)

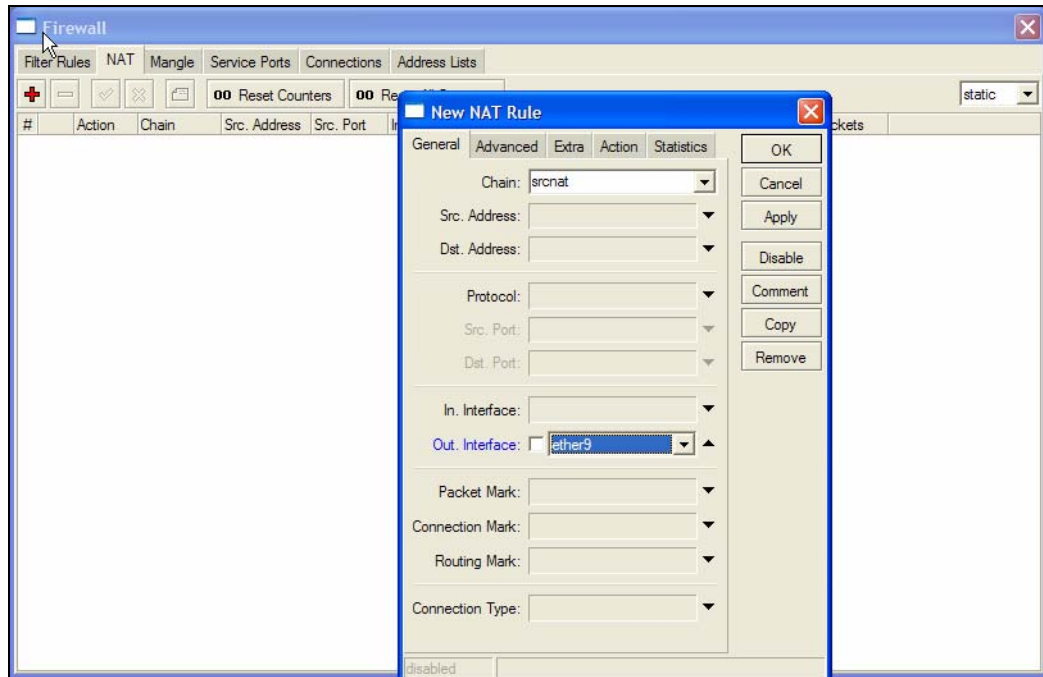


Figure 24

Next in the New NAT Rule select the ACTION tab. The ACTION needs to be set to MASQUERADE. Click APPLY then OK and the NAT masquerade is configured. (Figure 25)

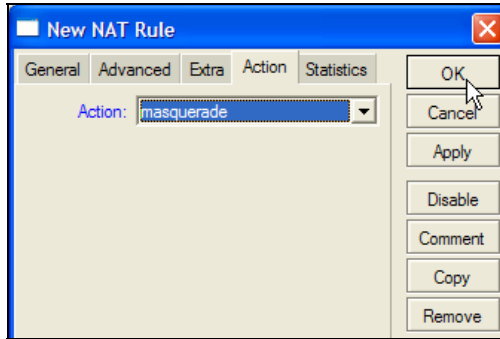


Figure 25

Configuring DHCP Server

By default the DHCP Server service is enabled in Trango Broadband configuration on Ether1, 2, 3, 4, 5, WLAN, and the bridge interfaces. In order to create a DHCP Server from within Winbox select IP then DHCP Server. This will open the DHCP Server window (Figure 26)

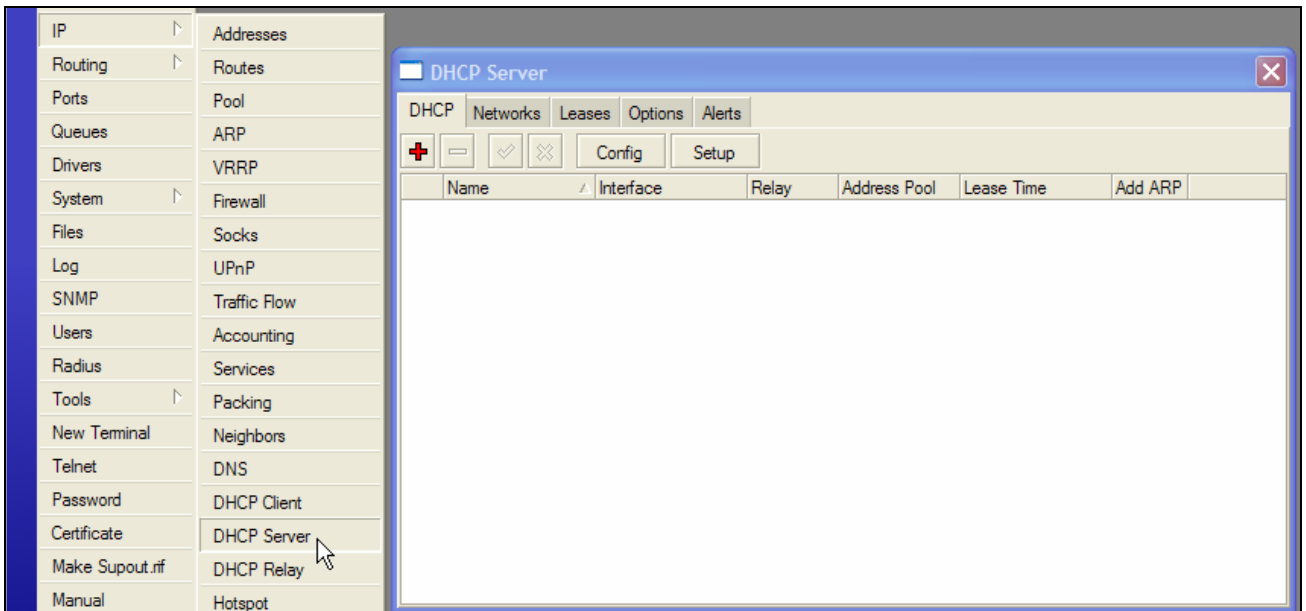


Figure 26

Clicking the Setup button in the DHCP Server window will bring up the DHCP Server Setup window. Select the interface on which to run DHCP services. (Figure 27)

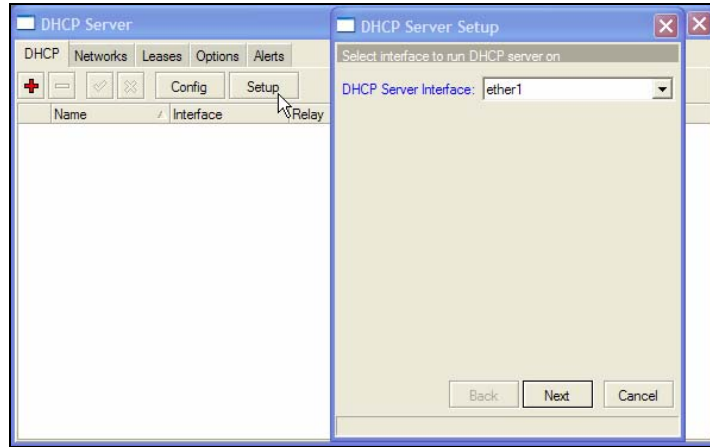





Figure 27

Once the interface is selected, the DHCP Address Space will need to be added. (Figure 28) This will be followed by the Gateway for DHCP Network. (Figure 29)

 Note The DHCP Gateway is the IP address of the interface.
 Note: If not filled out properly the Setup will end without creating the DHCP server 

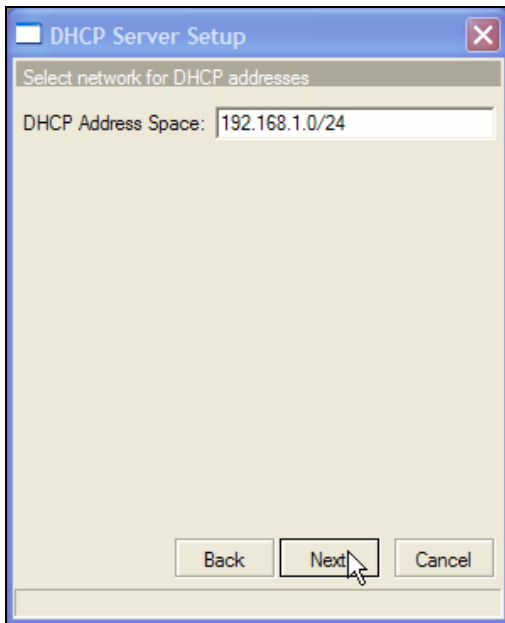


Figure 28

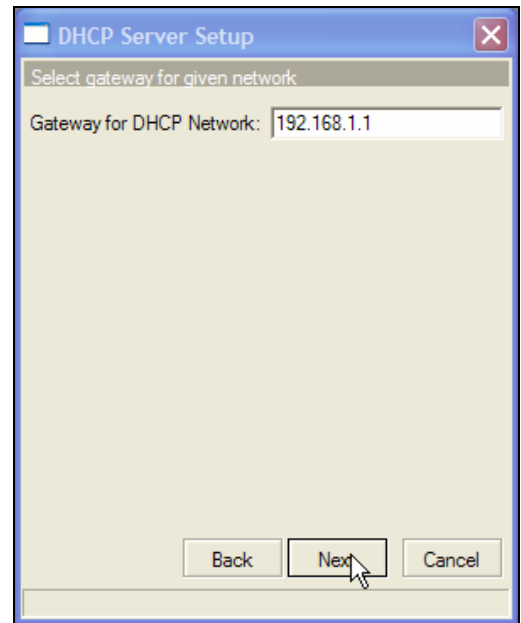



Figure 29

The next prompt will be for the range of IP addresses to give out. This will create an IP pool automatically. (Figure 30) After the IP address range is given, a DNS server IP address is required. (Figure 31)

 Note: If not filled out properly the Setup will end without creating the DHCP server

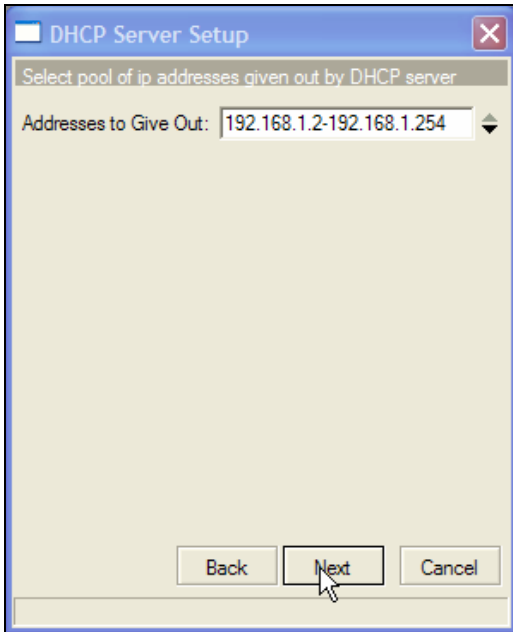


Figure 30

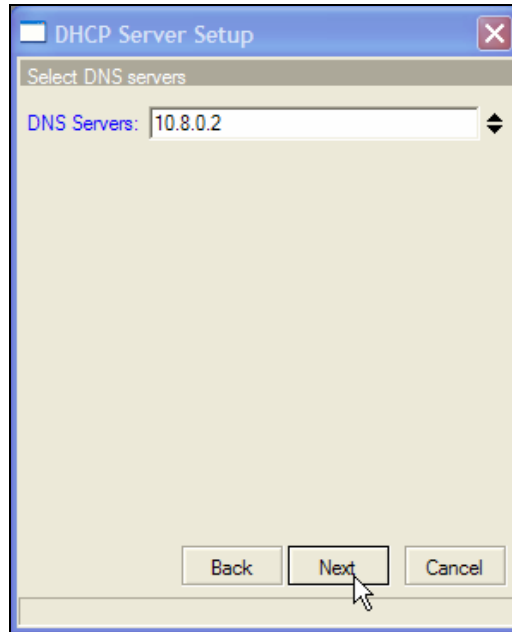


Figure 31

Lastly the Lease Time will need to be given. The default is 3 days. The format is days:hours:minutes:seconds. If this is filled out properly a success windows will open. (Figure 33)

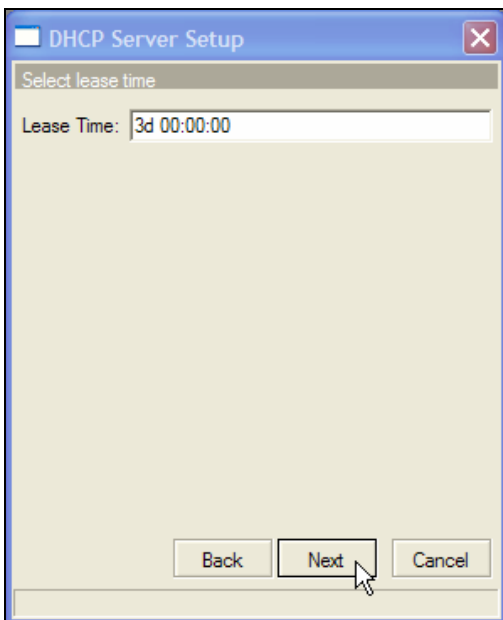


Figure 32

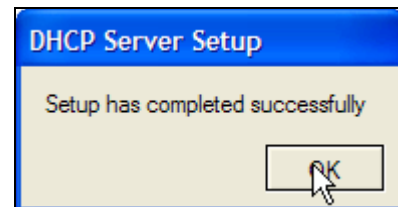


Figure 33

Configuring OSPF

OSPF stands for Open Shortest Path First. This routing protocol is the key to creating redundancy by the HD Mesh node. This Section will cover how to configure OSPF. The OSPF configuration window can be opened by selecting Routing then OSPF. (Figures 34 & 35)



Figure 34

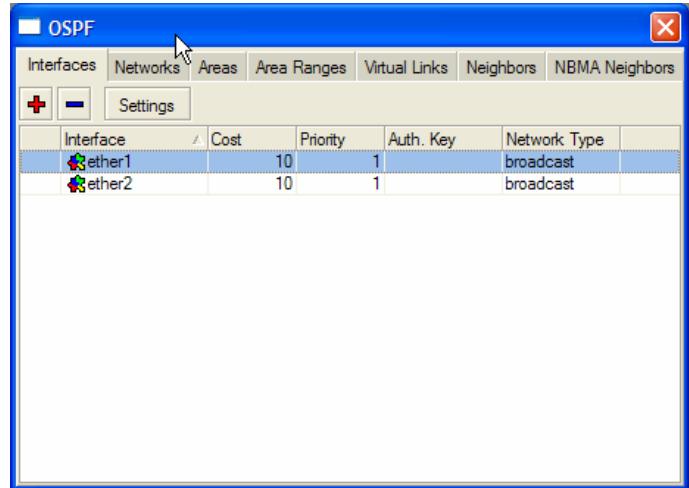



Figure 35

Create an area by clicking on the 'area' tab and then clicking on the red plus sign. This will open the New OSPF Area. The following information will need to be supplied. The Area NAME, AREA ID in dotted format. The rest of the options can remain the same. (Figure 36)

 Note: THIS INFORMATION MUST BE THE SAME FOR ALL ROUTERS PARTICAPTING IN THE MESH

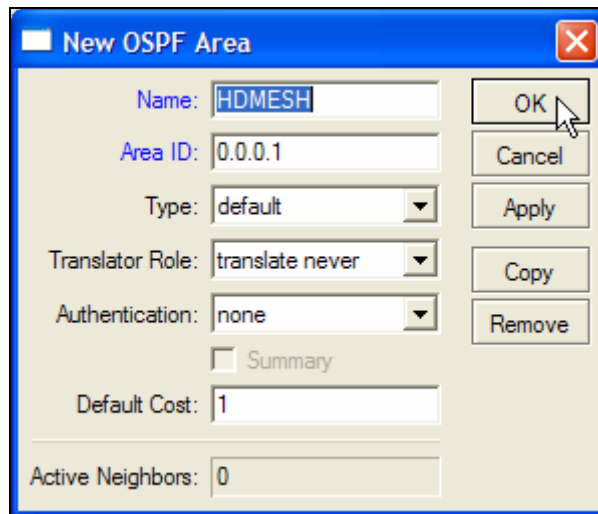


Figure 36

Once the Area is created, the OSPF Networks that will be distributed in the OSPF link need to be added. In the OSPF window (Figure 35) go to the Network tab and click on the Red Plus sign. This will open the OSPF network. The Network needs to be added to include the mask. Select the Area which was created. (Figure 37)

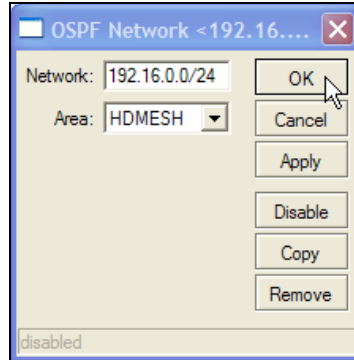



Figure 37

Now that the Area and Network have been added we need to configure which interfaces will pass OSPF information. In the OSPF window (Figure 35) under the interface tab click on the Red Plus Sign to open the New OSPF interface window. Select the interface and click APPLY then OK. (Figure 38)

 **Note:** THE FOLLOWING SETTING MUST BE THE SAME FOR ALL ROUTERS PARTICAPTING IN THE MESH

- Retransmit Interval
- Transmit Delay
- Hello Interval
- Router Dead Interval

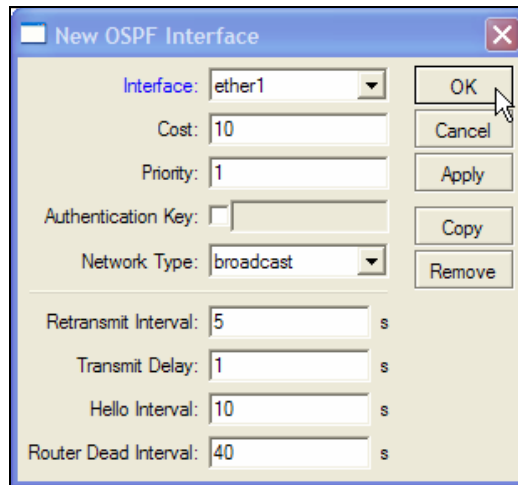


Figure 38

The final step is to configure the OSPF settings. In the Interface tab click on settings to bring up the OSPF settings windows. The setting will vary depending on the role of the router. If the router has a connection to the Internet then the following settings are recommended. (Figure 39)

- Redistribute Default Route = if installed (as type 2)
- Redistribute Connected Route = as type 1
- Redistribute Static Routes = as type 2

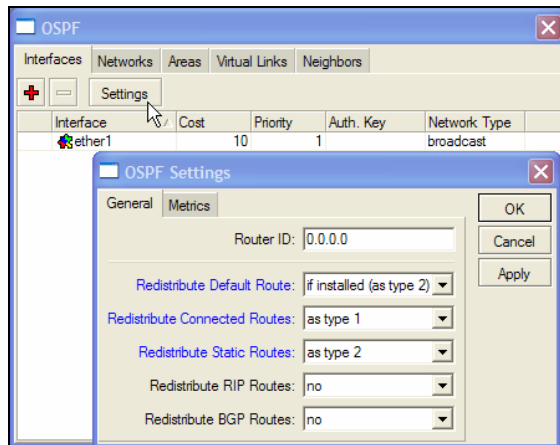


Figure 39

If your router is just participating in the OSPF then the following OSPF settings are recommended. (Figure 40)

- Redistribute Default Route = never
- Redistribute Connected Route = as type 1
- Redistribute Static Routes = no

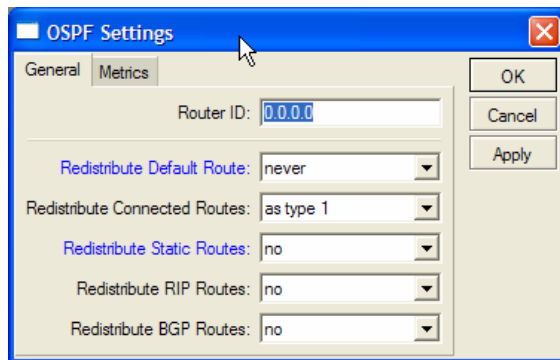



Figure 40

Section 5 Basic Configuration via CLI

This section describes a Command Line Interface configuration. This section is written to address only the basic steps. It is highly recommended that you visit and read Mikrotik's website www.mikrotik.com to gain an understanding of all configuration parameters.

In this section you will learn the following:

- Configure an IP address and Gateway
- Configure DHCP client
- Configure DHCP server

 Note: See Appendix A for more information on serial port.

The easiest and safest way to configure the router from the CLI is to use the “setup”. This will allow you to configure the router with simple menu driven options. If an invalid command entered then the setup program will terminate and no setting will take effect.

Launching CLI “Setup”

```
[admin@HDMESH] > setup
Setup uses Safe Mode. It means that all changes that are made during setup
are reverted in case of error, or if Ctrl-C is used to abort setup. To keep
changes exit setup using the 'x' key.

[Safe Mode taken]
Choose options by pressing one of the letters in the left column, before
dash. Pressing 'x' will exit current menu, pressing Enter key will select the
entry that is marked by an '*'. You can abort setup at any time by pressing
Ctrl-C.
Entries marked by '+' are already configured.
Entries marked by '-' cannot be used yet.
Entries marked by 'X' cannot be used without installing additional packages.
  r - reset all router configuration
+ l - load interface driver
* a - configure ip address and gateway
+ d - setup dhcp client
+ s - setup dhcp server
  p - setup pppoe client
  t - setup pptp client
  x - exit menu
your choice [press Enter to configure ip address and gateway]:
```

Configuring IP Address via CLI Setup

In the setup menu you can configure an IP address simply by supplying the interface name and the IP address with the netmask.

Example of configuring an IP address

```

  r - reset all router configuration
+ l - load interface driver
+ a - configure ip address and gateway
+ d - setup dhcp client
+ s - setup dhcp server
  p - setup pppoe client
  t - setup pptp client
* x - exit menu
your choice: a
+ a - add ip address
+ g - setup default gateway
* x - exit menu
your choice: a
enable interface: ether1
ip address/netmask: 192.168.4.1/24
#Enabling interface
/interface enable ether1
#Adding IP address
/ip address add address=192.168.4.1/24 interface=ether1 comment="added by \
  setup"
+ a - add ip address
+ g - setup default gateway
* x - exit menu
your choice: x
  r - reset all router configuration
+ l - load interface driver
+ a - configure ip address and gateway
+ d - setup dhcp client
+ s - setup dhcp server
  p - setup pppoe client
  t - setup pptp client
* x - exit menu
your choice: x

[Safe Mode released]

Setup completed successfully.
Following commands were executed during this setup:
#Enabling interface
/interface enable ether1
#Adding IP address
/ip address add address=192.168.4.1/24 interface=ether1 comment="added by \
  setup"
[admin@HDMESH] >
```

Configuring Gateway via CLI Setup

Simply selecting an option will bring the next menu prompt. The only information needed to set the Gateway is the gateway IP address.

Example of configuring the Gateway on the router

```
your choice [press Enter to configure ip address and gateway]: a
+ a - add ip address
* g - setup default gateway
  x - exit menu
your choice [press Enter to setup default gateway]: g
gateway: 192.168.4.254
#Adding default route
/ip route add dst-address=0.0.0.0/0 gateway=192.168.4.254 comment="added by \
  setup"
+ a - add ip address
+ g - setup default gateway
* x - exit menu
your choice: x
  r - reset all router configuration
+ l - load interface driver
+ a - configure ip address and gateway
+ d - setup dhcp client
+ s - setup dhcp server
  p - setup pppoe client
  t - setup pptp client
* x - exit menu
your choice: x
```

Configure DHCP Client via CLI Setup

Follow the menu options and supply the interface which is to be configured as a DHCP client.

```
  r - reset all router configuration
+ l - load interface driver
+ a - configure ip address and gateway
+ d - setup dhcp client
+ s - setup dhcp server
  p - setup pppoe client
  t - setup pptp client
* x - exit menu
your choice: d
interface: ether8
#Adding DHCP client
/ip dhcp-client add disabled=no interface=ether8 comment="added by setup"
  r - reset all router configuration
+ l - load interface driver
+ a - configure ip address and gateway
+ d - setup dhcp client
+ s - setup dhcp server
  p - setup pppoe client
  t - setup pptp client
* x - exit menu
your choice: x
```

Configuring DHCP Server via CLI Setup

Following the menu option the following information will need to be provided in order to create the DHCP Server

- DHCP server interface:
- DHCP address space:
- gateway for DHCP network:
- DHCP relay
- addresses to give out:
- DNS servers:
- lease time:

Example of a configured DHCP server.

```
+ s - setup dhcp server
  p - setup pppoe client
  t - setup pptp client
* x - exit menu
your choice: s
dhcp server interface: ether6
dhcp address space: 192.168.0.0/24
gateway for dhcp network: 0.0.0.1
dhcp relay: 0.0.0.0
addresses to give out: 0.0.0.2-255.255.255.254
dns servers: 192.168.1.1,10.8.0.2
lease time: 3d
#Adding DHCP server IP address pool
/ip pool add name=dhcp-pool-1 ranges=0.0.0.2-255.255.255.254
#Adding DHCP network
/ip dhcp-server network add address=192.168.0.0/24 \
    dns-server=192.168.1.1,10.8.0.2 gateway=0.0.0.1 comment="added by setup"
#Adding DHCP server
/ip dhcp-server add interface=ether6 address-pool=dhcp-pool-1 \
    lease-time=3d00:00:00 disabled=no
  r - reset all router configuration
+ l - load interface driver
+ a - configure ip address and gateway
+ d - setup dhcp client
+ s - setup dhcp server
  p - setup pppoe client
  t - setup pptp client
* x - exit menu
your choice: x

[Safe Mode released]

Setup completed successfully.
[admin@HDMESH] >
```


Section 6 Default Configuration

The HD Mesh node is configured with the first 5 ports as router ports, each with their own IP address. The ports are also configured to give out DHCP IP addresses. Ports 6, 7, and 8 are configured to act as a single bridge. The bridge is configured with an IP Address and also as a DHCP server. The wireless card is configured with its own IP address and also as a DHCP Server. Port 9 is configured as a DHCP client. (Figure 41)

Port	IP address	Bridge	Comments
Ether 1	192.168.1.1/24	No	DHCP Server issues IP addresses from DHCP range 192.168.1.50-100
Ether 2	192.168.2.1/24	No	DHCP Server issues IP addresses from DHCP range 192.168.2.50-100
Ether 3	192.168.3.1/24	No	DHCP Server issues IP addresses from DHCP range 192.168.3.50-100
Ether 4	192.168.4.1/24	No	DHCP Server issues IP addresses from DHCP range 192.168.4.50-100
Ether 5	192.168.5.1/24	No	DHCP Server issues IP addresses from DHCP range 192.168.5.50-100
Ether 6	N/A	Yes	Bridge port 1
Ether 7	N/A	Yes	Bridge port 1
Ether 8	N/A	Yes	Bridge port 1
Ether 9		No	DHCP Client- NAT
WLAN 1	192.168.1.10/24	No	802.11b/g SSID: HDMESH
Bridge 1	192.168.7.1/24		DHCP Server issues IP addresses from DHCP range 192.168.7.50-100

Figure 41

Restoring Default Configuration WinBox

Each router has a backup of this configuration stored in its file system. The backup file can be seen through Winbox by selecting files. The name of the backup file is “OneMESH.backup”. Select this file and click on Restore and the unit will prompt you to restore and reboot.

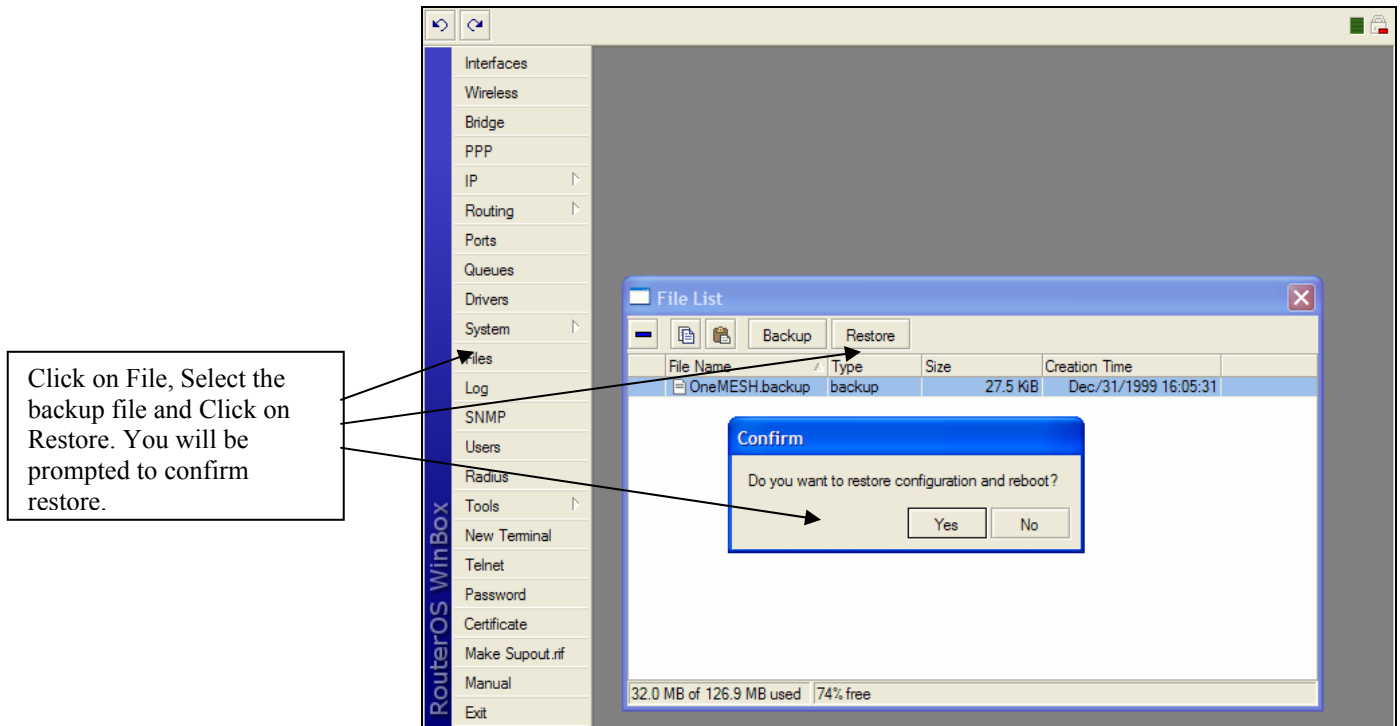


Figure 42

Restoring Default Configuration Command Line Interface

The default configuration can also be reloaded via the command line. Simply login to the Mikrotik router and type the following command. *System backup load name=OneMESH*

Example of loading default configuration.

```
MikroTik v2.9.32
Login: admin
Password:

MMM      MMM      KKK
MMMM     MMMM     KKK
MMM MMMM MMM III  KKK  KKK  RRRRRR   OOOOOO   TTT      III  KKK  KKK
MMM  MM  MMM  III KKKKK  RRR  RRR  OOO  OOO   TTT      III  KKKKK
MMM      MMM  III  KKK  KKK  RRRRRR   OOO  OOO   TTT      III  KKK  KKK
MMM      MMM  III  KKK  KKK  RRR  RRR   OOOOOO   TTT      III  KKK  KKK

MikroTik RouterOS 2.9.32 (c) 1999-2006      http://www.mikrotik.com/

Terminal ansi detected, using single line input mode
[admin@HDMESH] >

[admin@HDMESH] > system backup load name=OneMESH
Restore and reboot? [y/N]: y
Restoring system configuration
System configuration restored, rebooting now
[admin@HDMESH] system backup>
```

Appendix A Serial Port

The HD Mesh unit features a serial port. The serial port is useful in the event that the router cannot be accessed via TCP/IP (HTTP, Telnet, or Winbox). A Terminal Emulation program (such as HyperTerminal on the Windows operating system) can be used to access the HD Mesh's CLI using the serial port, which is located in the top right side of the enclosure. The serial 9 pin db female connector can be used with a standard null-modem cable to manage the HD Mesh unit.

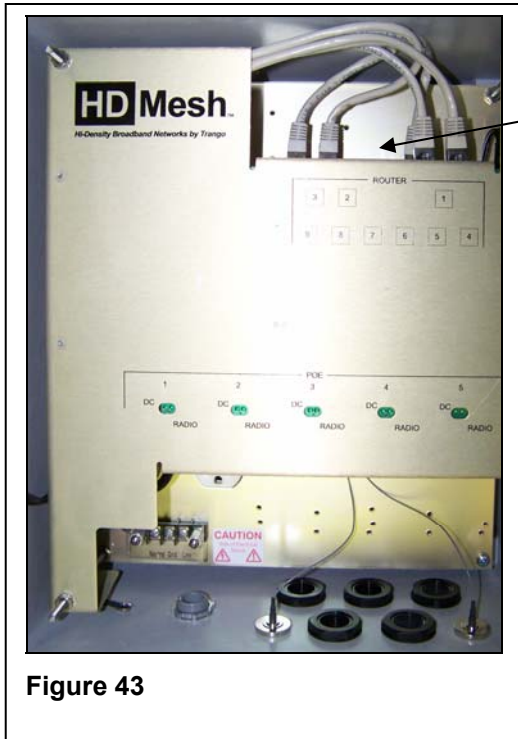
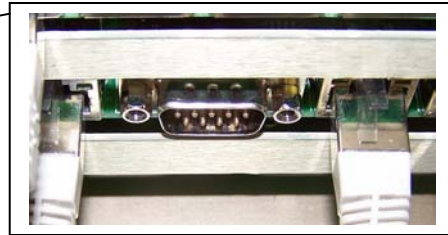


Figure 43



The settings below are needed to gain access to the HD Mesh unit via the console cable.

115200bit/s
8 data bits
1 stop bit
no parity
Hardware RTS/CTS

Management serial cable

The console cable needs to be a 9 pin db female to 9 pin db female connector cable. A null modem cable can be used to manage the HD Mesh unit. You can also use the pin outs below to manufacture your own serial cable.

DB9 Female	Function	DB 9 Female
1 + 6	CD+DSR	4
2	RxD	3
3	TxD	2
4	DTR	1 + 6
5	GND	5
7	RTS	8
8	CTS	7

Figure 44

Appendix B Specifications

All specifications apply to HD Mesh Node

<i>HD Mesh Node Enclosure</i>	
<i>HD Mesh Box</i>	NEMA rated outdoor enclosure
<i>Ratings</i>	NEMA 3R / IP42
<i>Dimensions</i>	14 in. × 12 in. × 7 in. (39.3 × 34.2 × 19.5 cm)
<i>Weight</i>	17 lbs (8 Kg)
<i>Router board</i>	9 Ethernet ports, configurable to either router or bridge ports
<i>PoE board</i>	5 PoE Ports, proprietary for Trango units only
<i>Omni 8 dBi antenna</i>	N-type female connector, 360° coverage
<i>Mounting hardware kit</i>	2 U-bolts (4 nuts), 2 mounting brackets, 1 screw kit (4 screws, 4 nuts, 4 washers)
<i>N Male connectors</i>	2 N-type connector caps
<i>Cat-5 Strain relief connectors</i>	6 to 12 mm
<i>Input voltage</i>	90-120 VAC or 210 - 230 VAC*
<i>Power consumption</i>	350 Watts maximum*
<i>Router</i>	
<i>Ethernet ports</i>	9 Auto-sensing ports (10/100/1000 Mbps), configurable to either router or bridge ports
<i>Serial port</i>	DB-9 (RS-232C), standard male DB9 asynchronous serial Port
<i>Expansion slots</i>	6 MiniPCI Slots (two can be use for two WiFi APs)
<i>Onboard memory</i>	64 MB NAND memory chip, CompactFlash type I/II slot
<i>Temp range</i>	-40° F to 140° F (-40° C to 60° C) †

Wireless Board	
<i>Sensitivity</i>	<p>802.11a: -88 dBm @ 6 Mbps, -71 dBm @ 54 Mbps</p> <p>802.11b: -95 dBm @ 1 Mbps, -90 dBm @ 11 Mbps</p> <p>802.11g: -90 dBm @ 6 Mbps, -74 dBm @ 54 Mbps</p>
<i>Security</i>	<p>Hardware 40 bit & 108 bit WEP.</p> <p>Hardware AES-CCM</p>
<i>Modulation techniques</i>	<p>802.11b/g: DSSS (DBSP, DQPSK, CCK) OFDM for data rate > 20 Mbps</p> <p>802.11a: OFDM (BPSK, QPSK, 10-QAM, 64-QAM)</p>
<i>RF power output</i>	<p>18 dBm @ 2.4 GHz</p> <p>17 dBm @ 5.8 GHz</p>
<i>Wi-FiR</i>	WECA Compliant, FCC Part 15 (USA)

* The system will use a maximum of 350 Watts. However, if any of the other 3 outlets are in use, the consumption will increase by the device's power consumption.

† Fan turns ON at 120° F (49° C) and OFF at 90° F (32° C).
Heat plate turns ON at -40° F (-40° C) and OFF at 60° F (15° C).